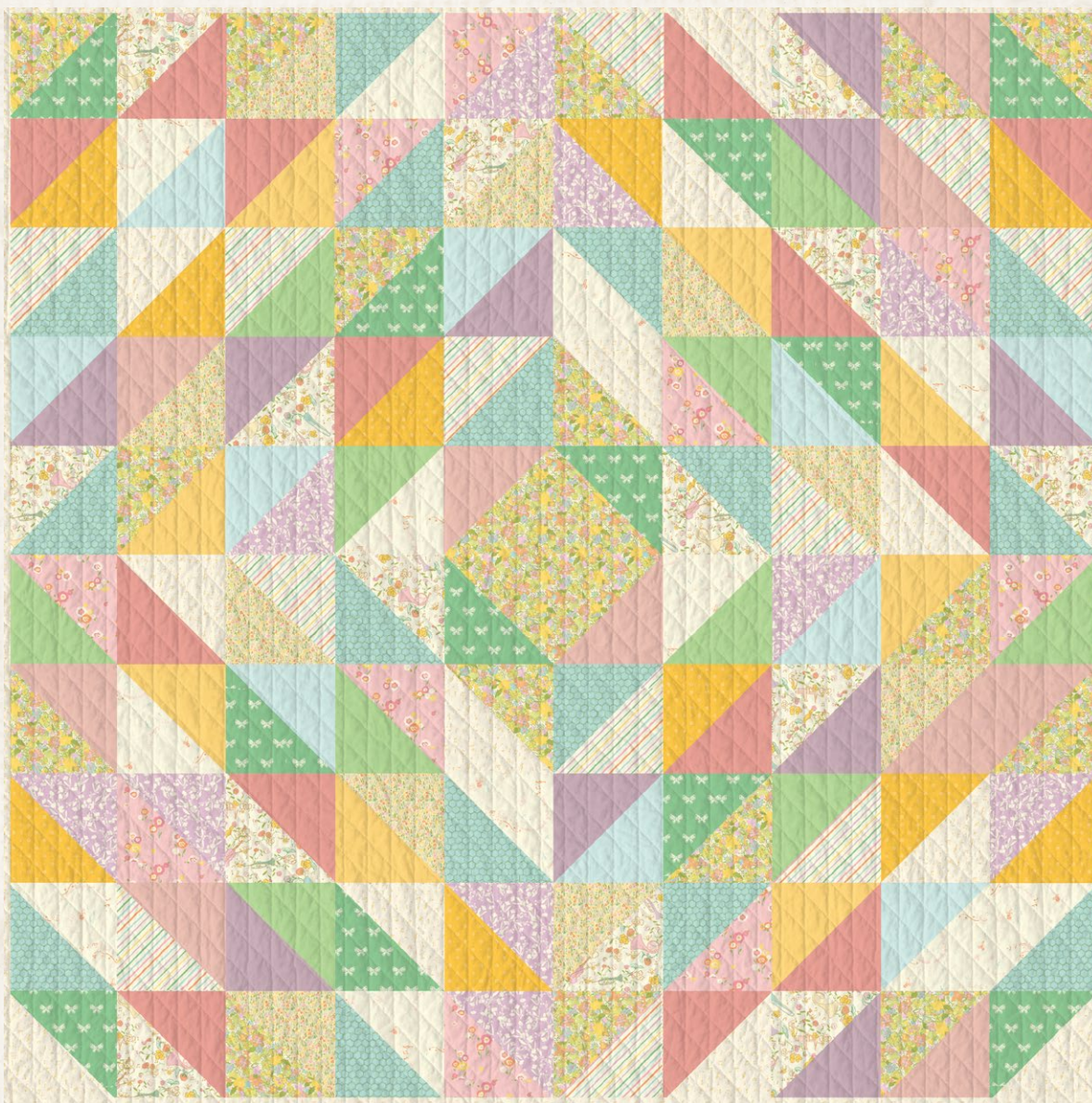




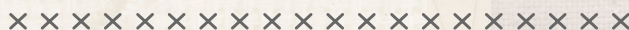
# SOUNDS of Nature



ANGLES

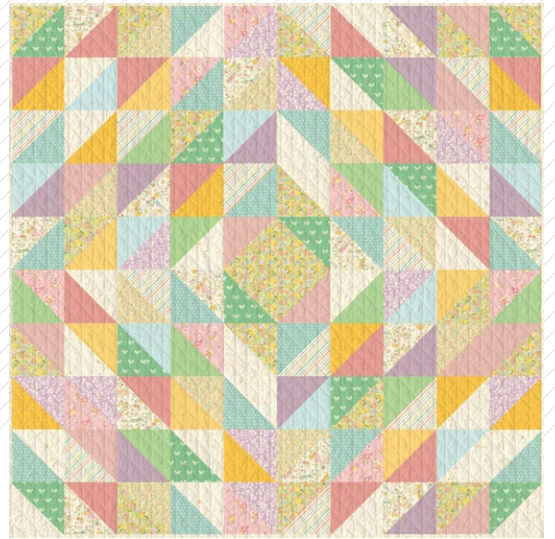
A DIVISION OF AGF

FREE PATTERN



# SOUNDS of Nature

QUILT DESIGNED BY AGFstudio



FABRICS DESIGNED BY PATTY BASEMI



LUB88100  
NATURE'S MELODY



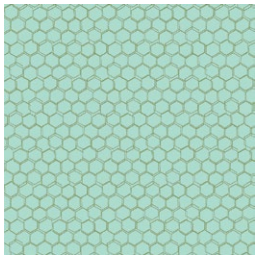
LUB88105  
MEANT TO BEE



LUB88111  
FLUTTERING LANES



LUB88103  
GARDENLAND SUN



LUB88110  
BEE HOME



LUB88109  
BEE YOU SWEET



LUB88102  
SWEET FLORETS ROSE



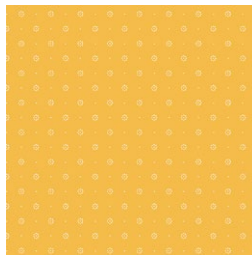
LUB88107  
NATURAL SYMPHONY



LUB88106  
RAINBOW CHORDS



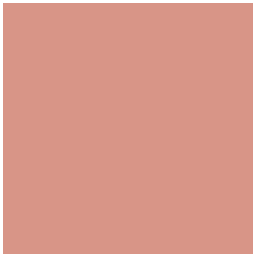
LUB88104  
DANCING NOTES



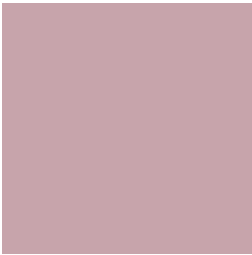
LUB88101  
HONEYED TUNES



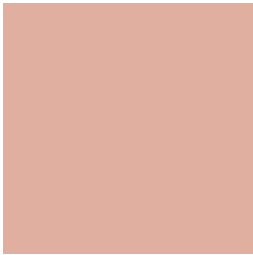
ADDITIONAL BLENDERS FOR THIS PROJECT



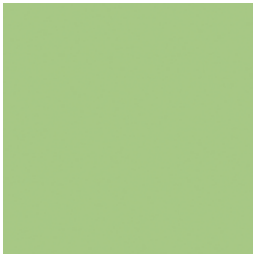
**PE488**  
BLOSSOMED



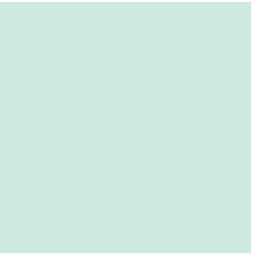
**PE425**  
MAUVELOUS



**PE505**  
BLUSHING



**PE462**  
PISTACHIO CREME



**PE451**  
ICY MINT



**PE435**  
BANANA CREAM

# SOUNDS of Nature

FINISHED SIZE | 70" x 70"

## FABRIC REQUIREMENTS

Fabric <b>A</b>	LUB88100	½ yd.
Fabric <b>B</b>	LUB88105	½ yd.
Fabric <b>C</b>	LUB88111	½ yd.
Fabric <b>D</b>	PE488	½ yd.
Fabric <b>E</b>	LUB88103	¼ yd.
Fabric <b>F</b>	LUB88110	½ yd.
Fabric <b>G</b>	LUB88109	½ yd.
Fabric <b>H</b>	LUB88102	¼ yd.
Fabric <b>I</b>	LUB88107	¼ yd.
Fabric <b>J</b>	LUB88106	½ yd.
Fabric <b>K</b>	LUB88104	⅞ yd.
Fabric <b>L</b>	PE425	¼ yd.
Fabric <b>M</b>	PE505	¼ yd.
Fabric <b>N</b>	LUB88101	¼ yd.
Fabric <b>O</b>	PE462	¼ yd.
Fabric <b>P</b>	PE451	¼ yd.
Fabric <b>Q</b>	PE435	¼ yd.

### BACKING FABRIC

LUB88109 4 ½" yds (*Suggested*)

### BINDING FABRIC

Fabric **K** LUB88104 (*Included*)

## CUTTING DIRECTIONS

¼" seam allowances are included.

- Seven (7) 7⅞" squares from fabric **A**.
- Ten (10) 7⅞" squares from fabric **B**.
- Six (6) 7⅞" squares from fabric **C**.
- Seven (7) 7⅞" squares from fabric **D**.
- Five (5) 7⅞" squares from fabric **E**.
- Eight (8) 7⅞" squares from fabric **F**.
- Six (6) 7⅞" squares from fabric **G**.
- Five (5) 7⅞" squares from fabric **H**.
- Five (5) 7⅞" squares from fabric **I**.
- Six (6) 7⅞" squares from fabric **J**.
- Six (6) 7⅞" squares from fabric **K**.
- Seven (7) 1½" x WOF strips from fabric **K** (binding).
- Five (5) 7⅞" squares from fabric **L**.
- Five (5) 7⅞" squares from fabric **M**.
- Five (5) 7⅞" squares from fabric **N**.
- Five (5) 7⅞" squares from fabric **O**.
- Five (5) 7⅞" squares from fabric **P**.
- Four (4) 7⅞" squares from fabric **Q**.





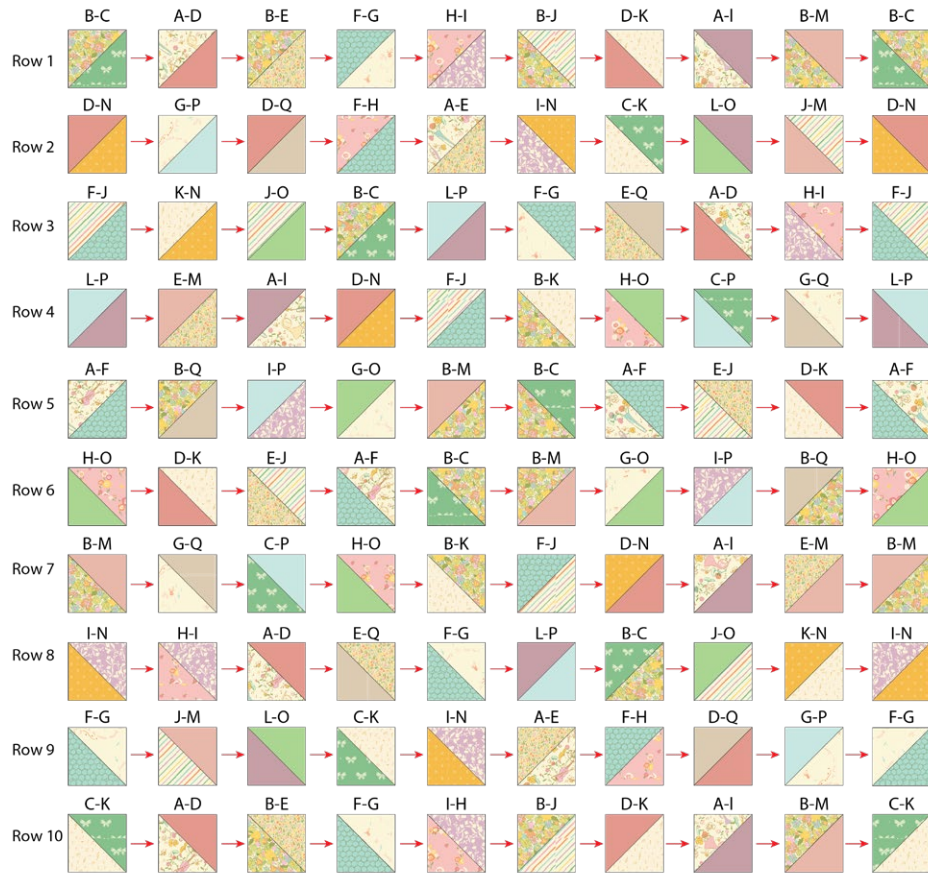


DIAGRAM 5

- Join rows 1-10.

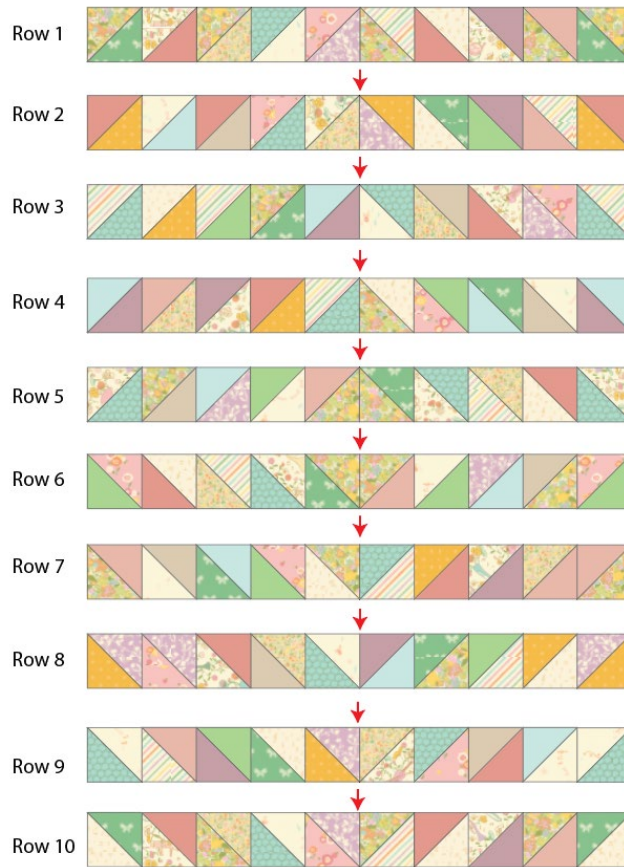


DIAGRAM 6

## QUILT ASSEMBLY

*Sew rights sides together.*

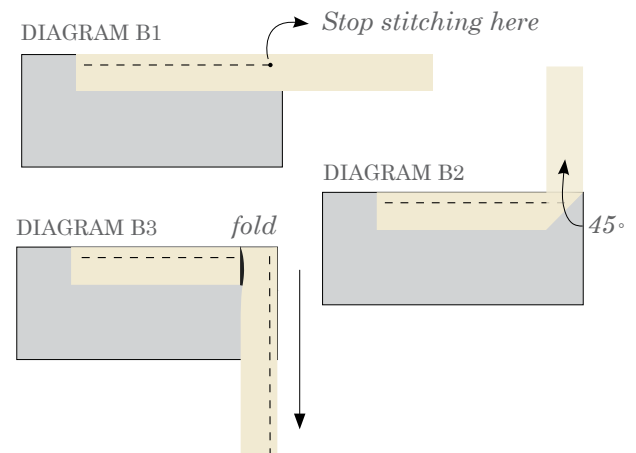
- Place BACKING FABRIC on a large surface wrong side up. Stretch it with masking tape against that surface.
- Place BATTING on top of backing fabric.
- Place TOP on top of the batting with right side facing up. Smooth away wrinkles using your hands.
- Pin all layers together and baste with basting thread, using long stitches. You can also use safety pins to join the layers.
- Machine or hand quilt starting at the center and working towards the corners. Remember that quilting motifs are a matter of personal preference. Have fun choosing yours!
- After you finished, trim excess of any fabric or batting, squaring the quilt to proceed to bind it.

## BINDING

*Sew rights sides together.*

- Cut enough strips  $1\frac{1}{2}$ " wide by the width of the fabric **K** to make a final strip 290" long. Start sewing the binding strip in the middle of one of the sides of the quilt, placing the strip right side down and leaving an approximated 5" tail. Sew with  $\frac{1}{4}$ " seam allowance (using straight stitch), aligning the strip's raw edge with the quilt top's raw edge.
- Stop stitching  $\frac{1}{4}$ " before the edge of the quilt (DIAGRAM B 1). Clip the threads. Remove the quilt from under the machine presser foot. Fold the strip in a motion of  $45^\circ$  and upward, pressing with your fingers (DIAGRAM B2). Hold this fold with your finger, bring the strip down in line with the next edge, making a horizontal fold that aligns with the top edge of the quilt (DIAGRAM B3). Start sewing at  $\frac{1}{4}$ " of the border, stitching all the layers. Do the same in the four corners of the quilt.

- Stop stitching before you reach the last 5 or 6 inches. Cut the threads and remove the quilt from under the machine presser foot. Lay the loose ends of the binding flat along the quilt edge, folding the ends back on themselves where they meet. Press them together to form a crease. Using this crease as the stitching line, sew the two open ends of the binding with right sides together (you can help yourself marking with a pencil if the crease is difficult to see).
- Trim seam to  $\frac{1}{4}$ " and press open. Complete the sewing. Turn binding to back of the quilt, turn raw edge inside and stitch by hand using blind stitch.





XX

*Congratulations  
& enjoy*

XX



[artgalleryfabrics.com](http://artgalleryfabrics.com)

NOTE: While all possible care has been taken to ensure the accuracy of this pattern, We are not responsible for printing errors or the way in which individual work varies.

Please read instructions carefully before starting the construction of this quilt. If desired, wash and iron your fabrics before starting to cut.

© 2023 Courtesy of Art Gallery Quilts LLC. All Rights Reserved.